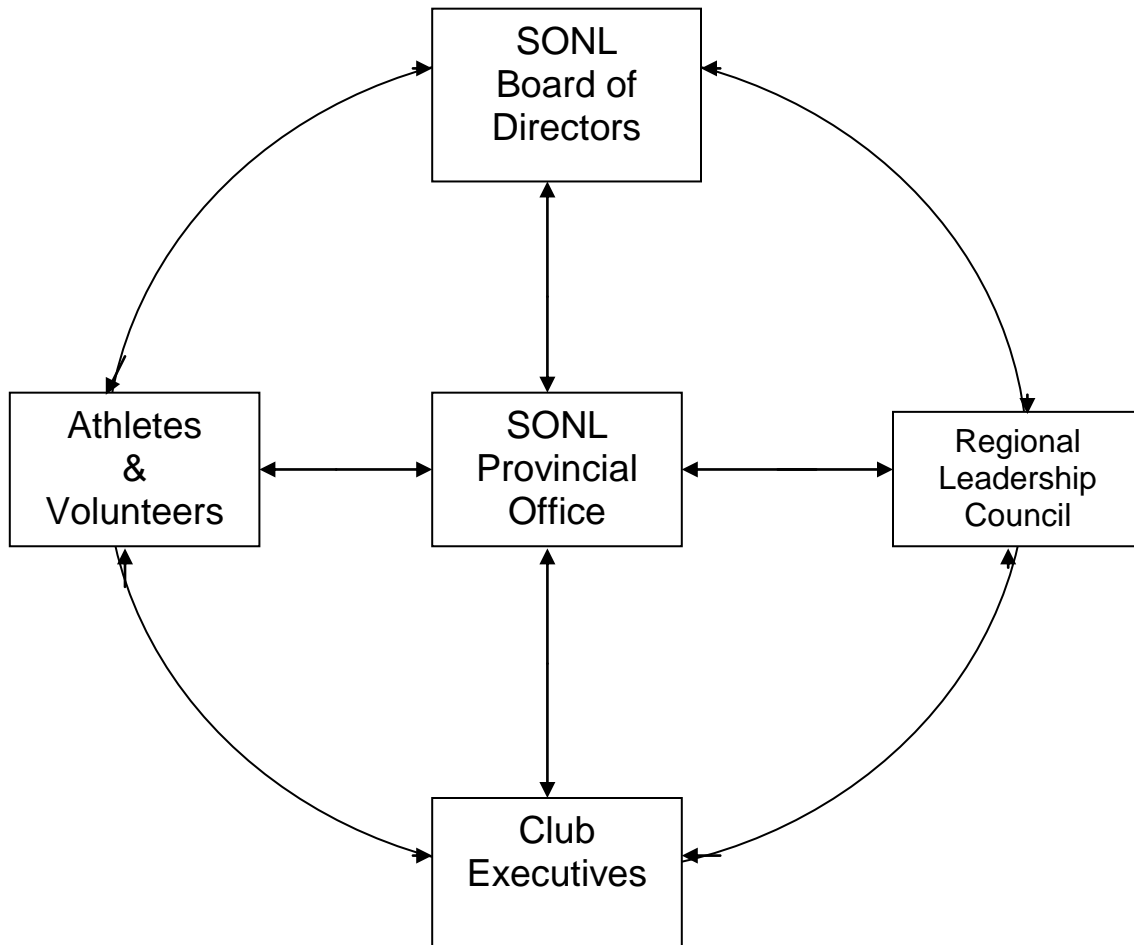


# SPECIAL OLYMPICS NEWFOUNDLAND AND LABRADOR ORGANIZATIONAL STRUCTURE



**SONL - Board of Directors** - 16 individuals

**Regional Leadership Council** - The Club & Program Coordinators from each club as well as an elected Chairperson, Vice Chair Person, and Secretary

**Club Executives** - Minimum of 3 individuals elected by the club membership